

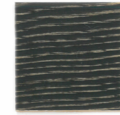
Woods



Natural Oak



Ash-grey Oak



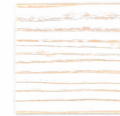
Black Valsain
(Kuskoa only)



Tourbe Oak



Carbon Oak



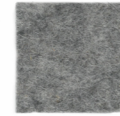
White Valsain
(Kuskoa only)



White Stained Oak



Walnut Stained Oak

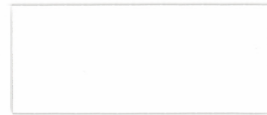


Color may vary
(Laila Backrest only)

Natural Wool Felt ↑

← Fenix
Technical Surface

← Bioplastic
(Kuskoa Bi only)



White 0032



Black 0720

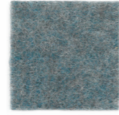


Sand

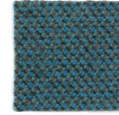


Clay

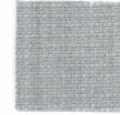
Fabrics



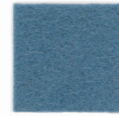
Luna 4704



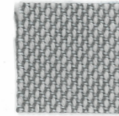
Capture 5001



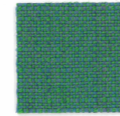
Crisp 4034



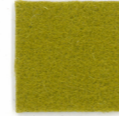
Europost 66119



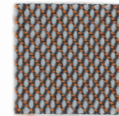
Steelcut Trio 113



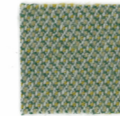
Crisp 4605



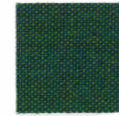
Europost 68072



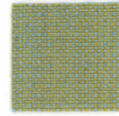
Steelcut Trio 416



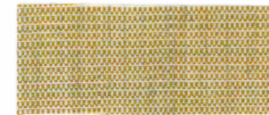
Capture 5101



Remix 982



Crisp 4201



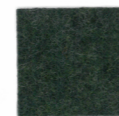
Canvas 414



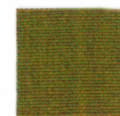
Europost 60017



Remix 873



Luna 4811

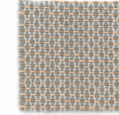


Remix 412

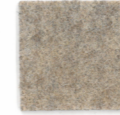
Fabrics



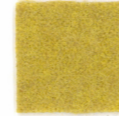
Steelcut Trio 453



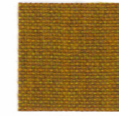
Crisscross 1502



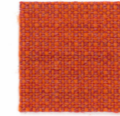
Luna 4101



Luna 4204



Remix 422



Crisp 4430



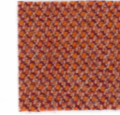
Crisp 4301



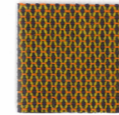
Luna 4006



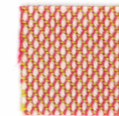
Remix 612



Capture 4301



Crisscross 01901



Steelcut Trio 515

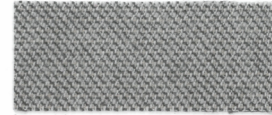


Europost 63004

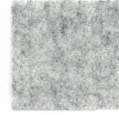


Europost 63070

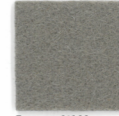
Fabrics



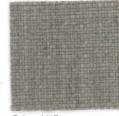
Capture 4101



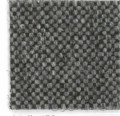
Luna 4013



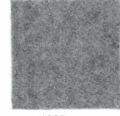
Europost 61003



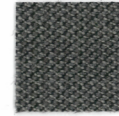
Crisp 4115



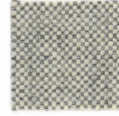
Molly 152



Luna 4009



Capture 4201



Molly 112



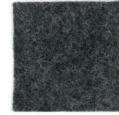
Molly 194



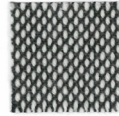
Crisp 4021



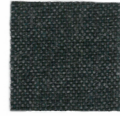
Molly 114



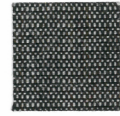
Luna 4012



Steelcut Trio 124



Remix 173



Canvas 154

Eco-leather



Palma Silver Grey



Palma NF Baltic



Palma NF Perle



Palma NF Smoke



Palma Mimosa



Palma NF Birke



Palma Fango



Palma NF Antrazit



Palma Olivbraun



Palma NF Schwartz



Palma Lachs



Palma Whisky



Palma NF Inka



Palma NF Kenia

Leather



Gracia 945



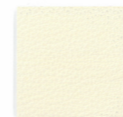
Gracia 930



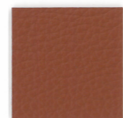
Gracia 950



Gracia 924



Gracia 929



Gracia 117



Gracia 967



Gracia 920



Gracia 902



Gracia 941



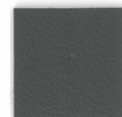
Gracia 925



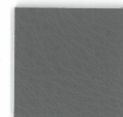
Gracia 903



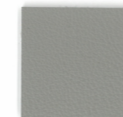
Gracia 911



Gracia 944



Gracia 908



Gracia 943

Technical information

	COMPOSITION	ABRASION RESISTANCE	FLAMMABILITY	
GROUP 1	EUROPOST 2 by Gabriel	100% Wools of New Zealand	Rubs Martindale (EN ISO 12947-2) + 500000 EN 1021 162 / UNI 9175 class 11 EMME / BS 5852 P1 + OIG IMO MSC 307 (88) Annex 1 Part 8	
	CAPTURE by Gabriel	85% Wools of New Zealand / 15% Polyamide	Rubs martindale (EN ISO 12947-2) 2000000 EN 1021 162 Cigarette and Match / BS 5852 Part 1 O1 Cigarette & match / CA TB 117-2013 UNI 9175 Class1 IEMME	
	REMIX 2 by Kvadrat	90% new wool (worsted) / 10% Nylon	Rubs martindale (EN ISO 12947) 1000000 EN1021 12 / NFD60013 / BS 5852 part 1 / US Cal. Bull. 117-2013	
	CRISP by Gabriel	93% Wools of New Zealand / 7% Polyamide	Rubs Martindale (EN ISO 12947-2) + 2000000 BS 5852 Part 1 O1 Cigarette & match / EN 1021 162 / CA TB 117-2013 / IMO MSC 307 (88) An1 Part 8 / MED Certificate IMD / UNI 9175 Class1 IEMME	
GROUP 2	PALMA by Skai (Eco-Leathers)	Approx. 89% PVC-compound / Approx. 11% CO-knitted fabric	Rubs martindale (EN ISO 5470-2) +500000 NF M2 / BS5852 IS-O-1 / EN1021-1+2 / DIN4102 (Part 1, B2) / MVSS302 / DIN53438 (Part 2)	
	PALMA NF by Skai (Eco-Leathers)	Approx. 83% PVC-compound / Approx. 17% CO-knitted fabric	Rubs martindale (EN ISO 5470-2) +500000 NF M1 / BS5852 IS-O-1+5 / DIN4102 (Part 1, B1) / DIN4102 (Part 1, B2) DIN53438 (Part 2) / EN1021-1+2 / MVSS302	
	CRISSCROSS by Gabriel	89% Wools of New Zealand / 11% Polyamide	Rubs Martindale (EN ISO 12947-2) +1100000 BS 5852 Part 1 O1 Cigarette & match / EN 1021 162 / MED Certificate IMO MSC 307 (88) Annex 1 Part 8	
	CANVAS 2 by Kvadrat	90% new wool (worsted) / 10% Nylon	Rubs martindale (EN ISO 12947) 1000000 EN1021 12 / NFD60013/ BS 5852 Part 1 / DIN 4102 B2 / US Cal. Bull. 117-2013	
GROUP 3	MOLLY 2 by Kvadrat	100% New Wool (worsted)	EN1021 12/ DIN 4102 B2 / US Cal. Bull. 117-2013 / UNI 9175 11M	
	LUNA 2 by Gabriel	90% Wools of New Zealand / 10% Polyamide	Rubs Martindale (EN ISO 12947-2) + 700000 CA TB 117-2013 / EN 1021 162 / BS 5852 Part 1 O1 Cigarette & match	
GROUP 4	STEELCUT TRIO 3 by Kvadrat	90% new wool (worsted) / 10% Nylon	Rubs martindale (EN ISO 12947) 1000000 EN1021 12 / NFD60013/ BS 5852 part 1 / DIN 4102 B2 / US Cal. Bull. 117-2013	
	SERIE 900 FUSION by Gracia (Leather)	Full Grain European leather slightly buffed / Pigmented and natural smooth grain / 1.0 - 1.2mm	Rub fastness (EN ISO 11640) / EN ISO 11640) Dry + 4, 800 cycles Note 4-5 Wet + 3 - 4, 200 cycles - Note 4-5	UNE EN 1021 162 / IMO norm MSC6(87), FTP code, Annex 1, Part 8, Resolution A.652 (16)
	SERIE 100 by Gracia (Leather)	Corrected grain / Pigmented and embossed 1.1 / 1.2mm Thickness	Rub fastness (DIN EN ISO 11640) Dry + 4, 1000 cycles Note 4-5 Wet + 4, 200 cycles - Note 4-5	UNE EN 1021-162 / IMO norm MSC6(87), FTP code, Annex 1, Part 8, Resolution A.652 (16)

For further information: / www.gabriel.dk / www.kvadrat.dk / www.curtidogracia.com / www.hornschuch.com (skai)

WOOD FINISHES : **Finish**: A sprayed layer of solvent color followed by brush wiping 2 layers of acrylic varnish. **Cleaning**: Wet cloth
FABRIC CLEANING : **Ink**: To be removed first with absorbent paper. Proceed from the border to the centre. To be cleaned up with alcohol (90°) and washed with water adding a neutral biological detergent. **Oils, grease and sauces**: Stain to be powdered with talc. Wait for a few minutes. Remove talc with a brush and slightly press with a rag using turpentine. Coffee, tea and milk: To be removed with absorbent paper. Then tampon using water along with a neutral biological detergent. **Chewing gum**: To be cooled using a plastic bag full of ice. Chocolate: Tampon with rag using tepid water. Pencil: To be cleaned with 90° alcohol. **Wine, champagne, alcohol**: To be removed as much as possible using absorbent paper. Then tampon using a linen detergent or diluted shampoo following the manufacturer's instructions. **Blood**: To be cleaned using water and a neutral detergent.

REF: 06460

Upholstery and finishes
 Tapizeriak eta akaberak
 Revêtements et finitions
 Tapizados y acabados
 —2018

www.alki.fr

alki

